

TRIBU  
TULO



A  Pixania development

PARADISE LIVING

# Welcome to TRIBUTO TULUM

Nestled inside the most exclusive gated community of Riviera Tulum, the project features three exclusive villas carefully designed for the enjoyment of the human experience, maximizing the benefits of the jungle environment.

The soul of the project is the balance of three elements: nature, privacy, and modern amenities.

TRIBUTO Tulum's architecture blurs the line between interior and exterior, leveraging lighting and the height of the building's ceilings to enhance the use of its garden and pool area. Native flora has also been preserved, which contributes to maintaining the aesthetic appeal and also helps keep the spaces fresh.

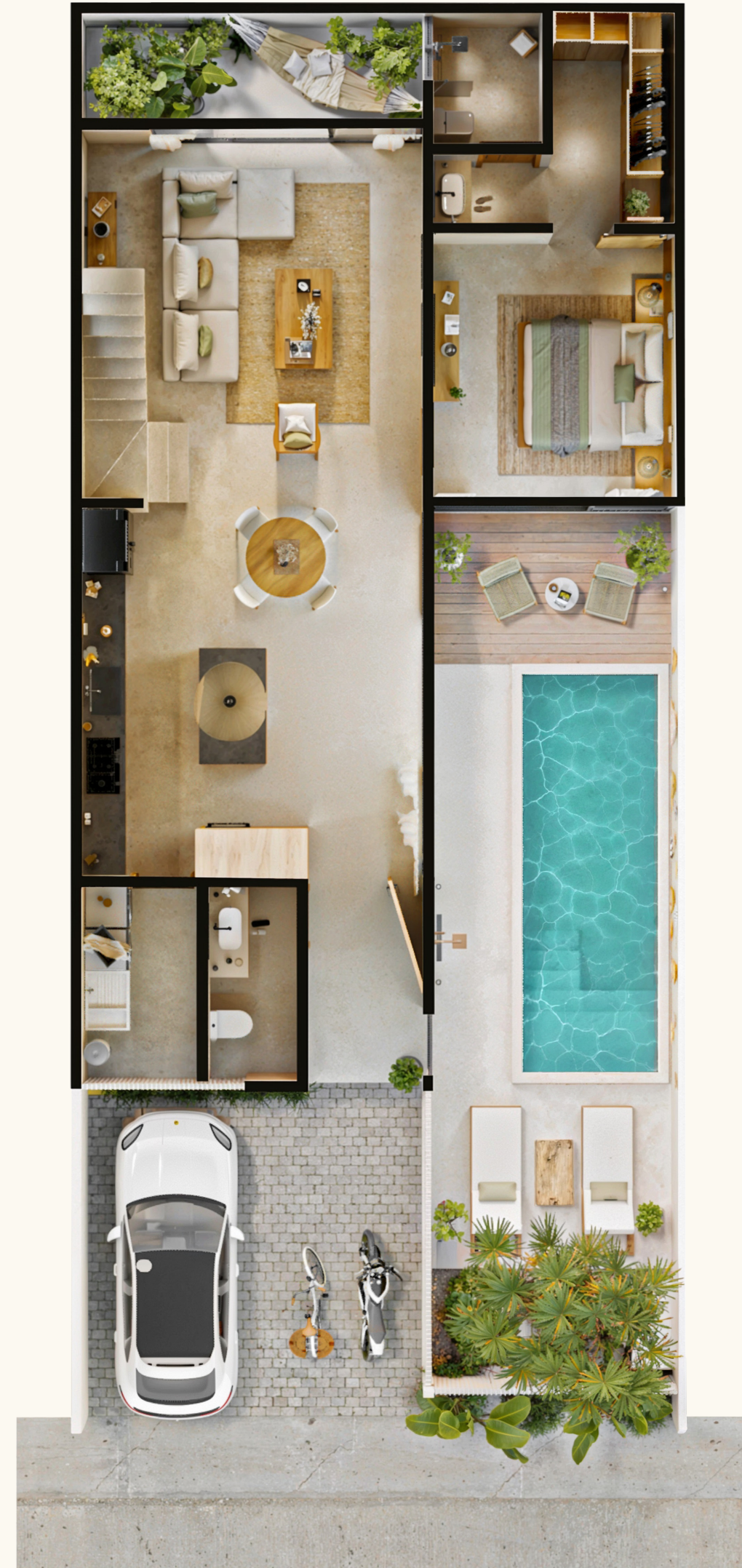


Maybe your primary residence,  
maybe your *second home*.

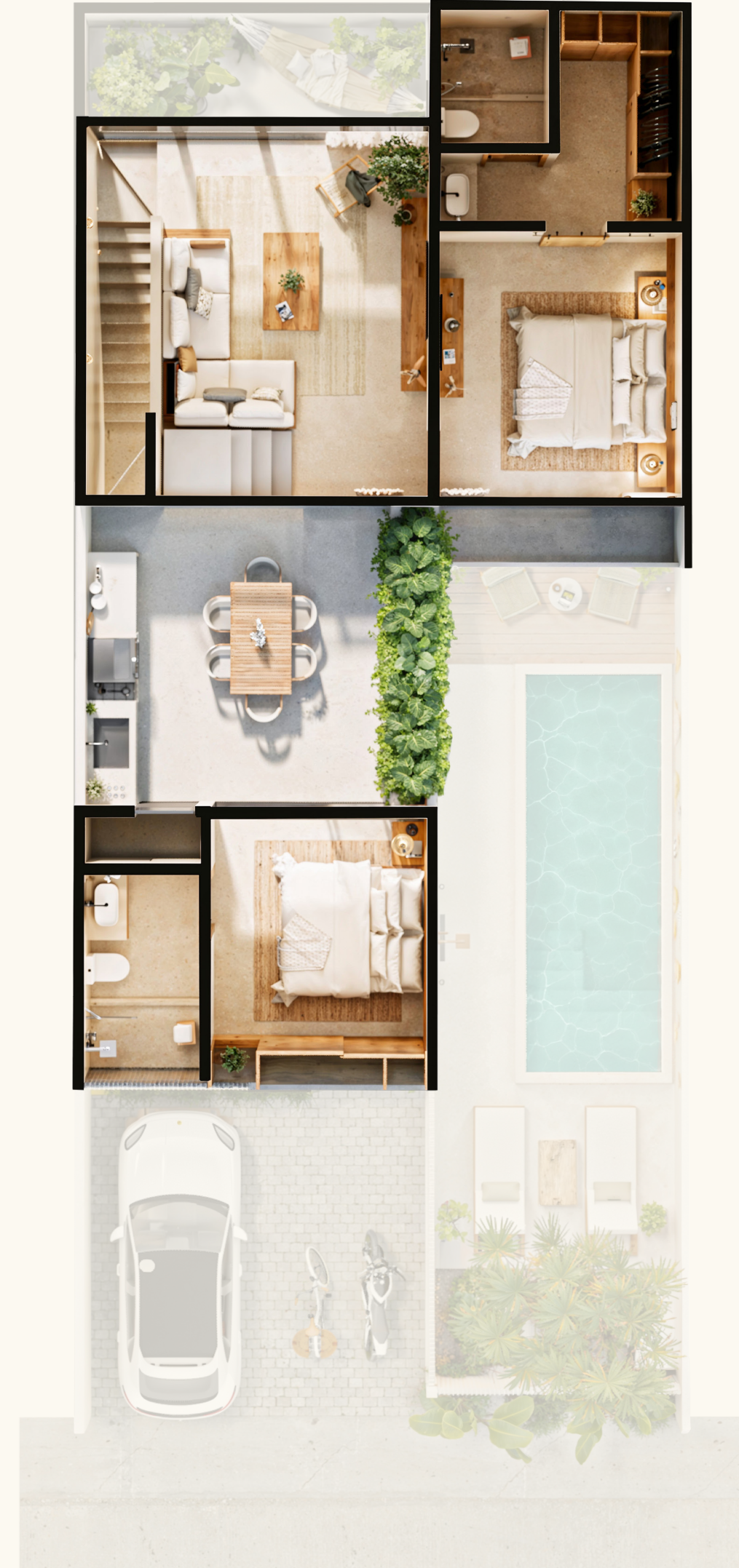
Located just 10 minutes from the beach, 30 minutes from Tulum International Airport, and 15 minutes from the Mayan Train station, TRIBUTO TULUM unfolds in an environment of high connectivity and economic growth. Tulum continues developing without neglecting its cultural and natural heritage, increasingly inviting people to stay for long periods of time or to settle permanently.



Ground floor



1st Level



# Unit Distribution

- 3 bedrooms
- 3.5 bathrooms
- Private Pool
- Grill Patio on second level
- Fitted Kitchen
- A/C Units + Fans

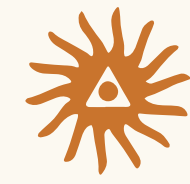
## DIMENSIONS:

Covered area: 2,045 ft<sup>2</sup> / 190 m<sup>2</sup>

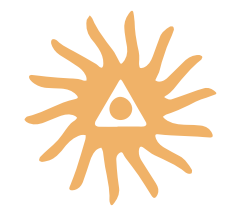
Grill Patio: 215 ft<sup>2</sup> / 20 m<sup>2</sup>

Private Pool: 176 ft<sup>2</sup> / 16 m<sup>2</sup>

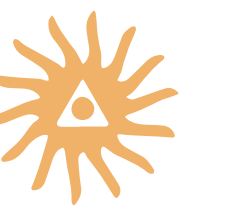
Parking space: 279 ft<sup>2</sup> / 26 m<sup>2</sup>



[www.pixaniadesarrollos/tributo](http://www.pixaniadesarrollos/tributo)



A MAGICAL PLACE







# TRIBUTO TULUM

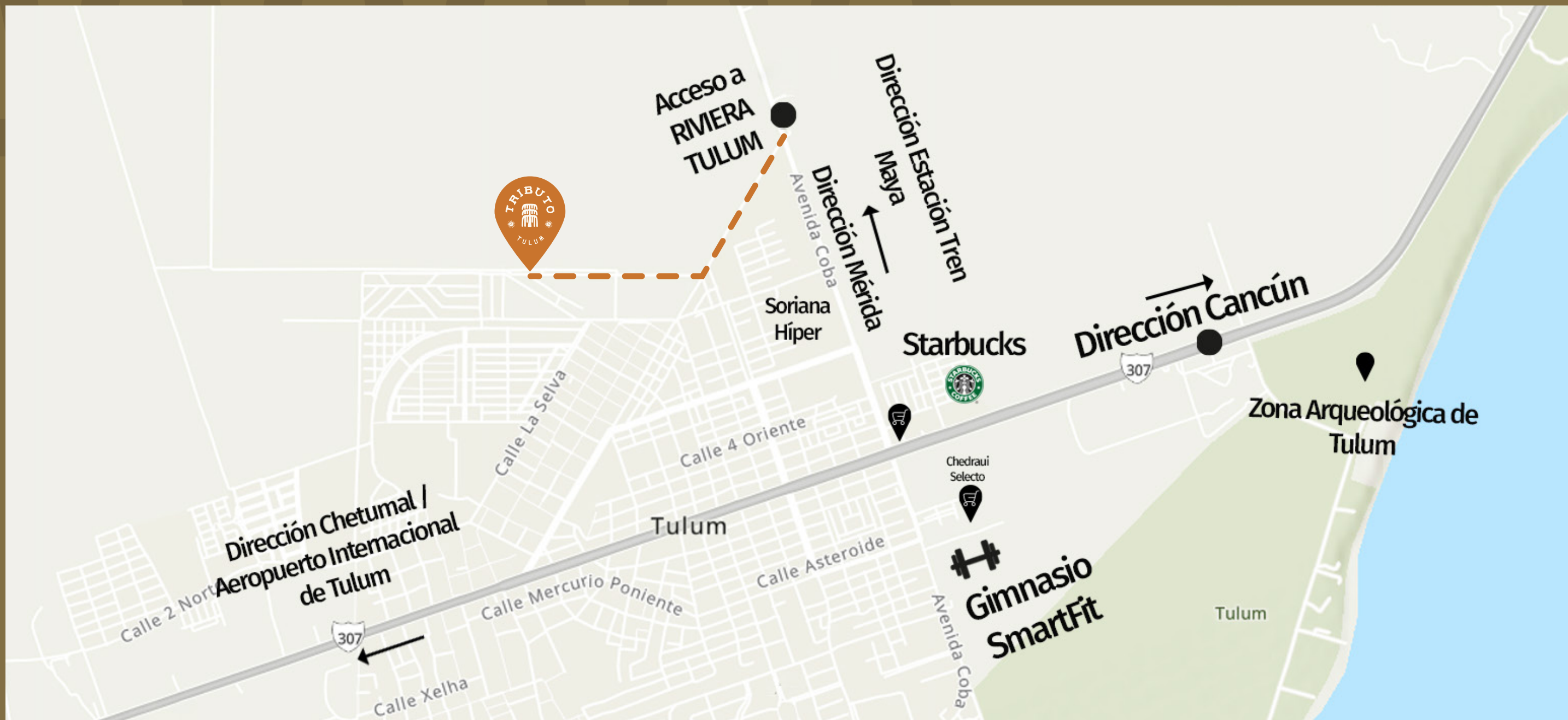
Is an exclusive development of three homes, nestled in a beautiful 80-lot gated community that is located within another gated community: RIVIERA TULUM.

## FEATURES OF THIS AMAZING GATED COMMUNITY:

- 24/7 PRIVATE SECURITY
- CONTROLLED ACCESS
- WATER SUPPLY
- SEWERAGE
- PADEL TENNIS COURT
- PICKLEBALL COURT
- SOCCER COURT
- BIKE PATHS
- OVER 1.7 ACRES OF COMMON GREEN SPACES
- KID'S PLAY AREA
- PET'S AREA

Only 3 miles away from the beach and 2 miles away from the downtown area, Riviera Tulum offers tranquility, sense of community and the best possible location for an unmatched quality of life.

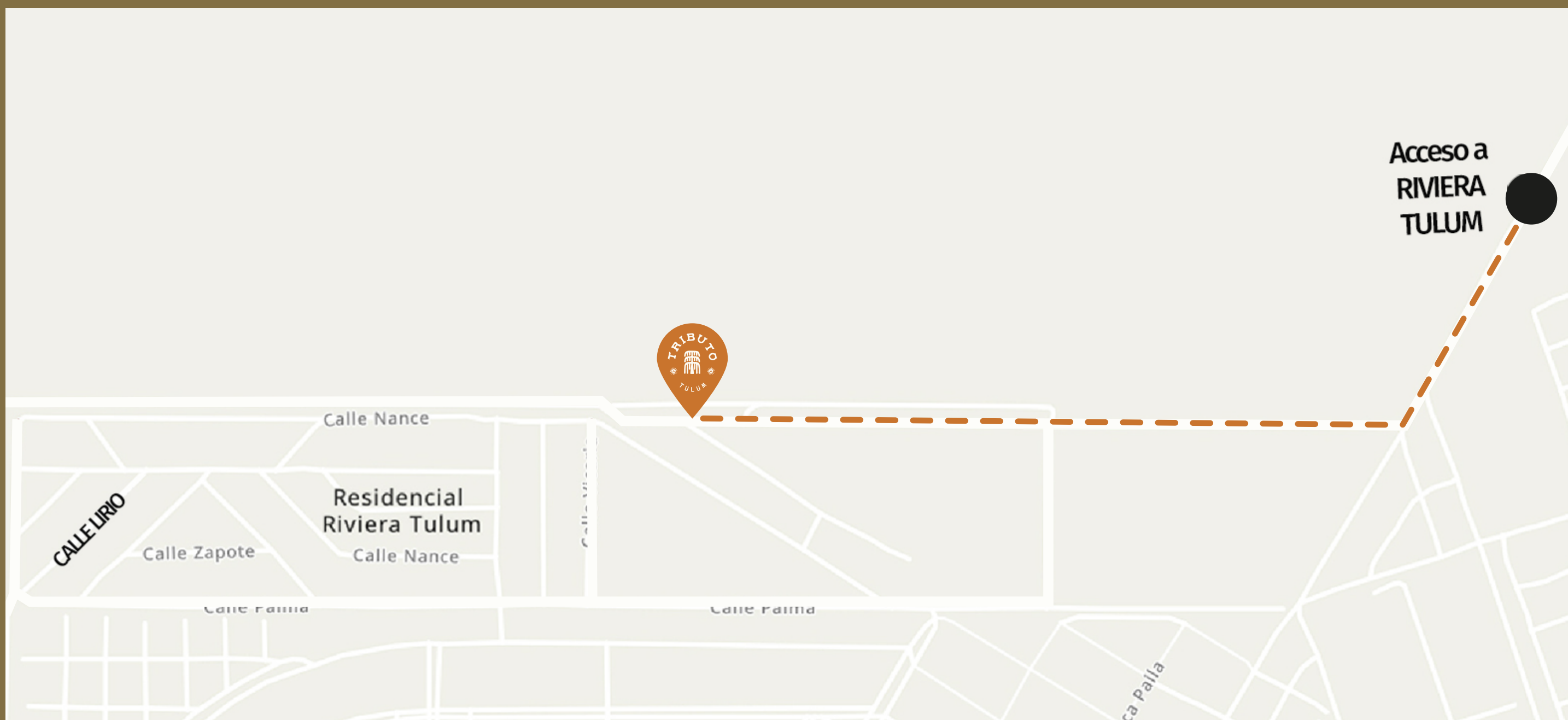




## LOCATION

Privada Palmeras, Lote 23, Manzana 6,  
Fraccionamiento Riviera Tulum. CP: 77760  
Tulum, Quintana Roo. México.

SEE MAP





Tulum's international airport

# FELIPE CARRILLO PUERTO

## DOMESTIC FLIGHTS:

- Cdmx
- Monterrey
- Guadalajara

## AIRLINES:

- American airlines
- Delta airlines
- Air canada
- United airlines
- Aeroméxico
- Discover airlines
- Spirit
- Viva aerobús
- Volaris\*
- Avianca

## INTERNATIONAL FLIGHTS:

- New york
- Frankfurt
- Toronto
- Montreal
- San Francisco
- Chicago
- Miami
- Atlanta
- Dallas
- Charlotte
- Houston
- Bogotá
- Panamá
- Calgary
- Detroit
- Minneapolis
- San José (Costa Rica)
- Québec

The airport will receive 5.5 million tourists each year. This is more than double the tourists Costa Rica will receive in its airports during 2025.

# MAYAN TRAIN

## What is it?

It's a new rail service that connects the main cities and tourist areas of the Yucatán Peninsula.

## Purpose

Connecting the Mayan world in five states in southeastern Mexico (Tabasco, Chiapas, Campeche, Yucatán, and Quintana Roo). This will reduce transportation times and costs for goods, passengers, and tourists within the peninsula.

More info: <http://www.trenmaya.gob.mx/>

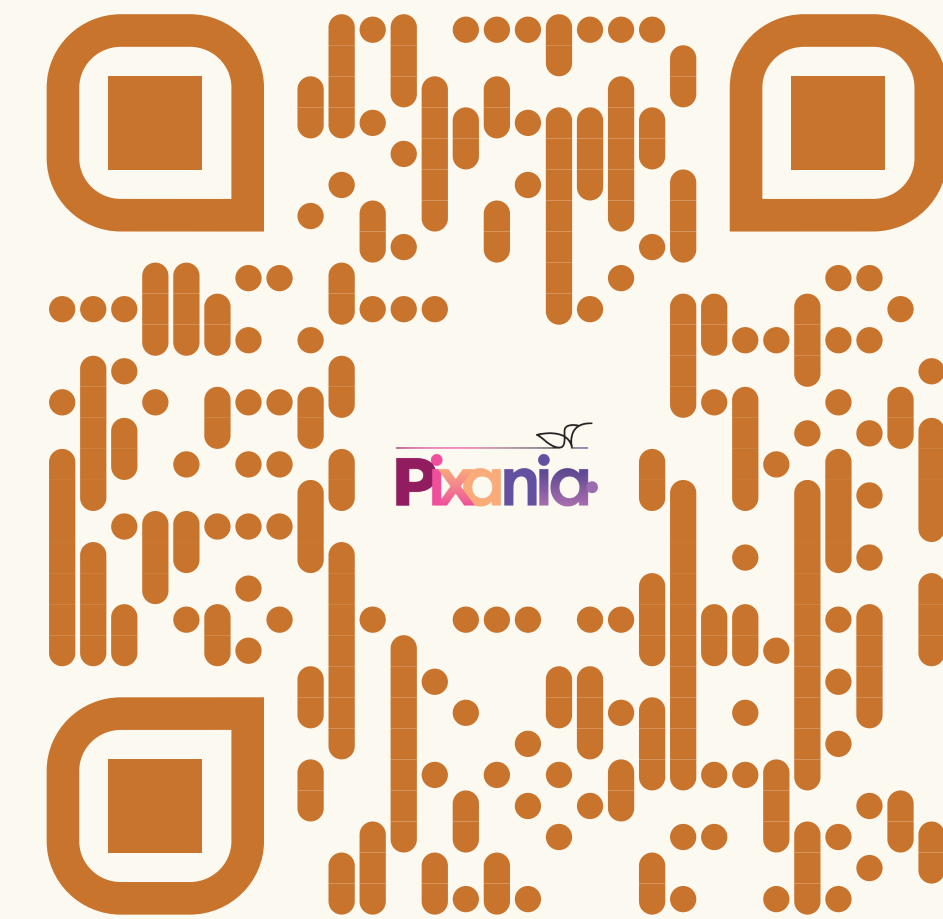
## Tulum

Tulum's infrastructure development is exponential and beneficial for short, medium, and long term investment. It boasts emblematic projects such as the new Tulum International Airport, which is connected to one of the Maya Train stations, thus providing connectivity to the entire Yucatan Peninsula. This includes areas that were previously difficult to access and are now just a couple of stops away.





FOR MORE  
INFORMATION



📞 998 578 0391

📷 pixaniadesarrollos

📘 Pixania Desarrollos

✉️ dzapata@proyectospixania.com

[www.pixaniadesarrollos/tributo](http://www.pixaniadesarrollos/tributo)